



**Maximization of reuse and recycling** – European deposit systems as a tool for combating the single use plastic challenge

Anna Larsson,  
Director, Reloop Europe

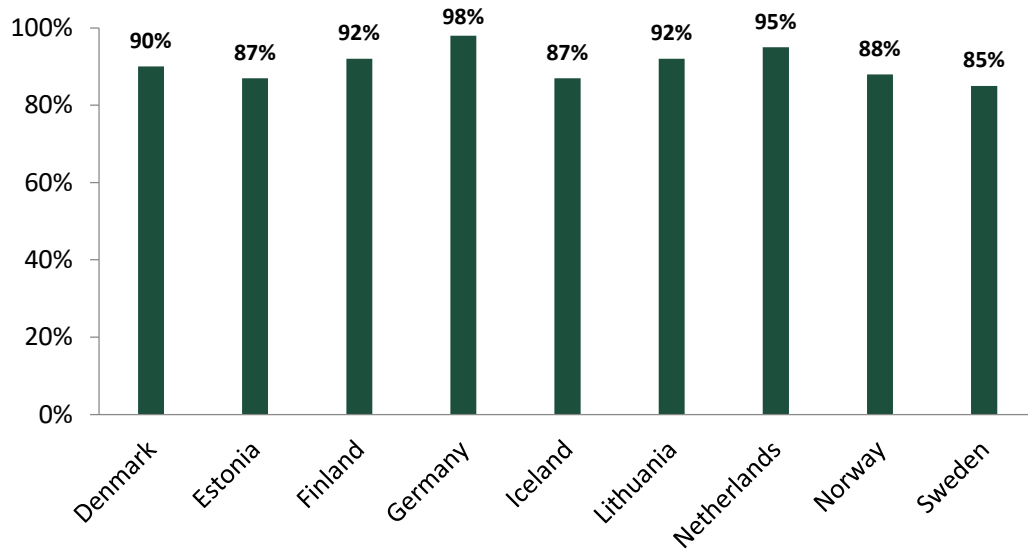


# High collection rates of good quality material



Deposit systems for beverage containers result with **high collection rates** as well as high **quality material recycling**.

In some countries, thanks to deposit systems, **loop of PET is already closed**.



The collection rates of the beverage packaging subject to the deposit system are over 85%. This is why many countries have already implemented the deposit system. Also the Single Use Plastic Directive recommends deposit schemes to tackle the challenge of the plastic pollution.

## PET BOTTLES



**EPR COST PRODUCER/IMPORTER**

	01.10.2018	Aluminium	Steel	PET	HDPE
<b>Basis EPR</b>		-0,08 Nkr	0,21 Nkr	0,10 Nkr	0,10 Nkr
<b>Standard kode</b>		0,06 Nkr	0,06 Nkr	0,06 Nkr	0,06 Nkr
<b>Light blue</b>				0,08 Nkr	0,08 Nkr
<b>Colored or sleeve &gt; 75 %</b>				0,15 Nkr	0,15 Nkr
<b>Sleeve eller label</b>		0,03 Nkr	0,03 Nkr		

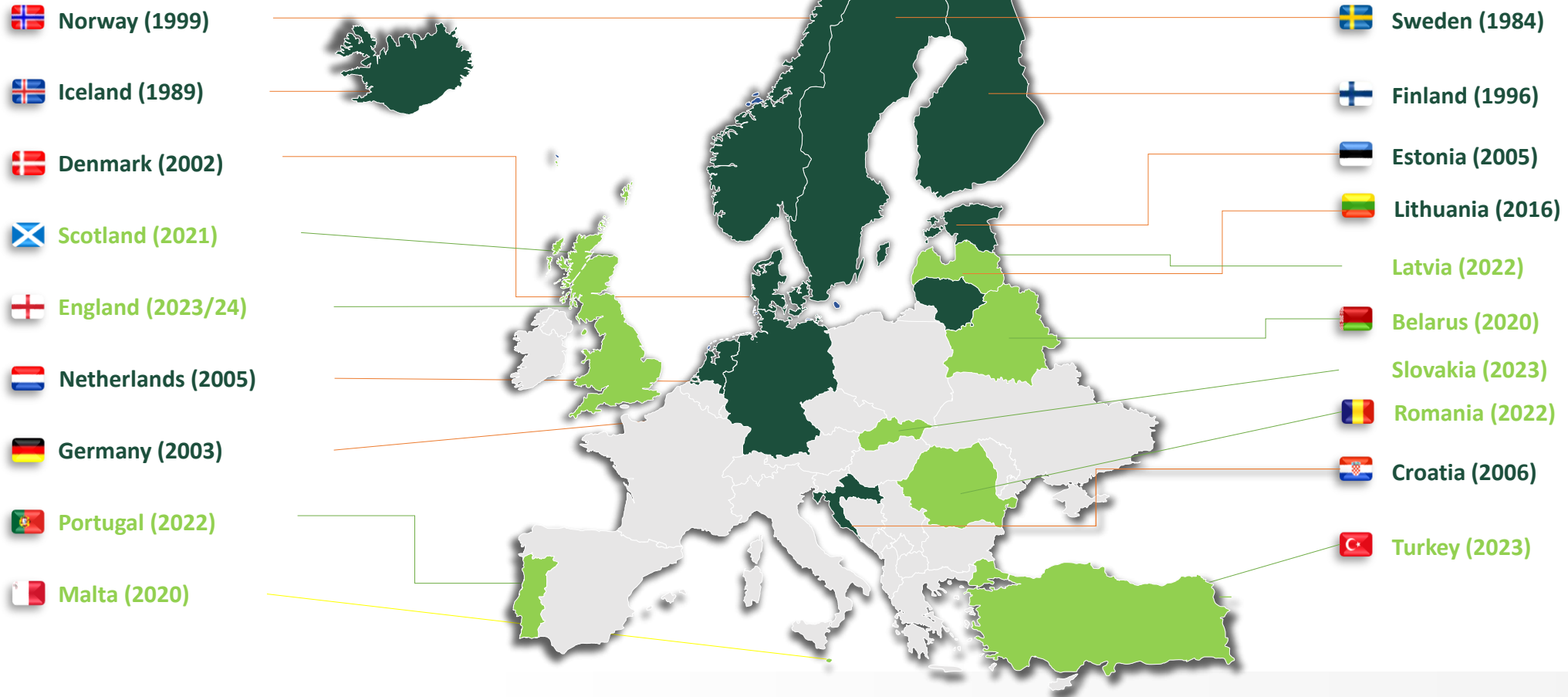
The operators of the deposit systems allow the packaging specifications that ensure most optimal recycling for the purposes of closed loop recycling. The containers in deposit systems are eco-designed for food grade quality which ensures high sales prices securing lower producers' fees. Applying of eco-modulation motivates producers to use packaging material which maximizes recycling yields.



# Deposit systems in Europe



## Deposit return systems implemented and **under implementation**

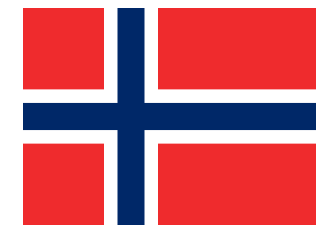
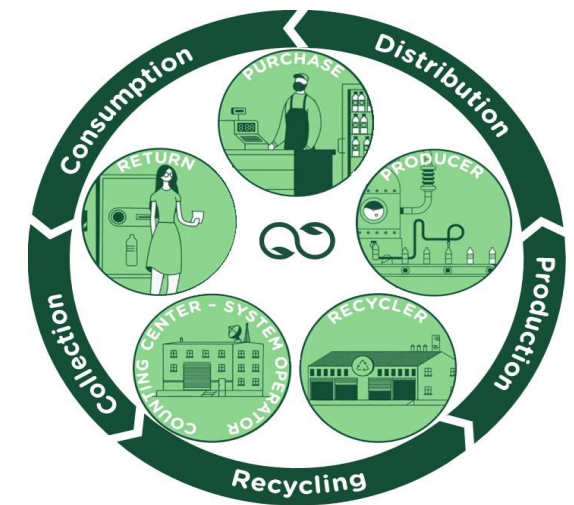




# Closing the loop on the local market



- Sweden found the practical ("*door-to-door*" recycling) and legal (*right of first refusal*) solution to close the loop for PET bottles on the local Swedish market
- Returpack invested in the production hall. The facility was up for a tender (*Build & operate*)
- Recycler purchased the technology line, received guarantee for the input material and has been offering local producers right of first refusal
- 80% rPET is guaranteed
- This model is now being implemented in Norway (picture)





## Single use - refillables

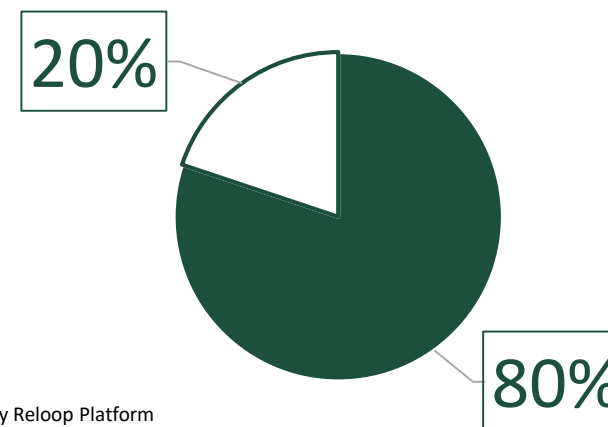


### INSTRUMENTS SUPPORTING DEVELOPMENT OF REFILLABLES:

- Establishing **deposit systems** for refillable and single use containers (obligatory system operated by authorized entity)
- Implement **eco-taxes**, **eco-levies** or green **fees** on single use containers
- Establishing or raising **quotas** for refillable containers (attributed to the market actors, possibly combined with credits)
- Implementing **bonuses** for refillables as well as solutions optimizing use of refillables (standardized bottles)
- Applying **reduced VAT rate** for refillable containers
- Establishing **binding waste reduction targets** (attributed to the market actors)
- Obligatory **Green Procurement**
- Financial **support programmes** for reuse infrastructure

ReLoop Platform is **currently analysing** policy instruments to establish which of them have been/can be successful and based on what conditions.

### Single-Use vs Refillable Containers All Countries, 2018

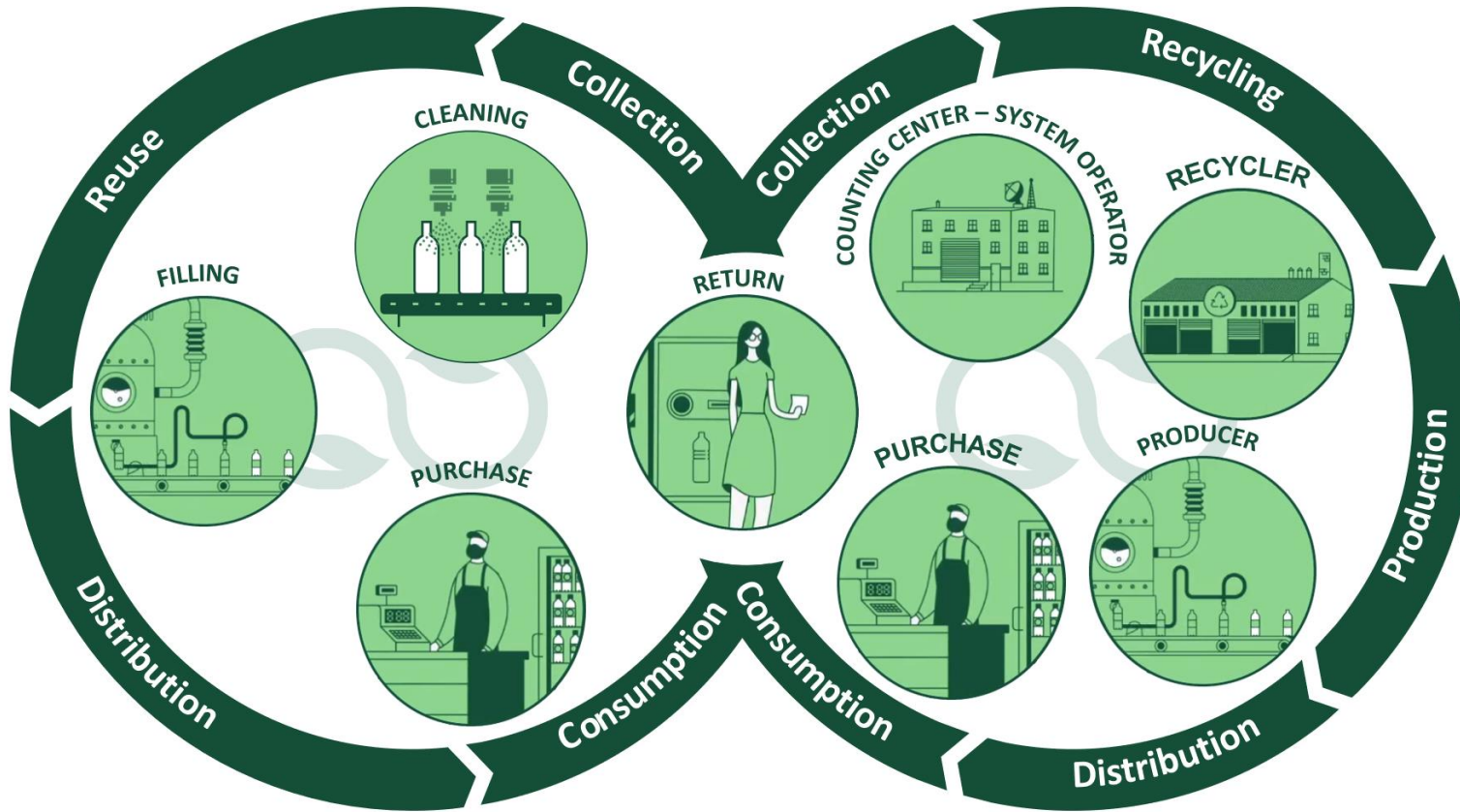


Produced by ReLoop Platform  
using data from GlobalData

■ Total NR 2018 ■ Total R 2018



# Deposit system for one way and refillable bevcons



In modern deposit systems, the collection infrastructure for one way and refillable containers is the same.





## One way and refillables?

Collection infrastructure and other DRS functionalities are easily integrated (like in Estonia, Lithuania, Finland, Denmark, Sweden)

- **Lower costs** (as same automated or manual collection infrastructure is used)
  - **User friendly** for the consumers (single point of return)
  - Possible CO<sub>2</sub> emissions decrease in logistics (rural area combined collection)
- **Easier for retailers**

Advantages of the approach:

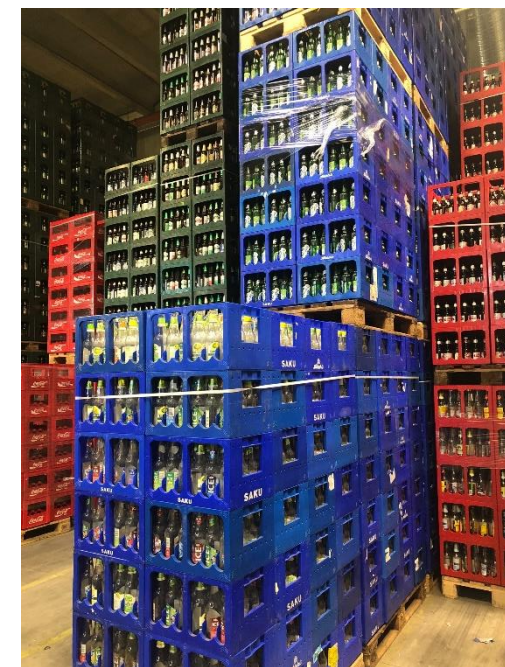


# Deposit system and potential for development of refillables



In Europe, where it is expected that EU based legislation will **support reusability**, centralized deposit systems for one-way containers create good pre-conditions for **growth of refillables**:

- There is/will be existing **collection infrastructure**
- There is/will be a **legal entity** which will be able to offer support services (**clearing, storage, logistics, preparation for reuse and reuse service at events**)



Reusable cups for festivals (photo credits: Eesti Pandipakend)

Preparation for reuse – bottles washing (photo credits: Oregon Beverage Recycling Cooperative)

Storage at a collection point, Lithuania (photo: ReLoop)

Storage of the refillables at the counting centre of DRS operator, Estonia (photo: ReLoop)



**Thank you!**  
**Anna Larsson**

twitter@reloop\_platform

www.reloopplatform.eu

reloop  
resources remain resources